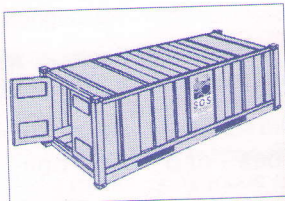


Container Specification



Standard 20'

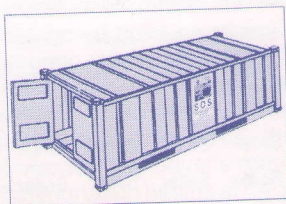
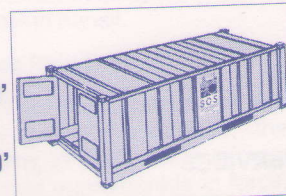
Standard 40'

INSIDE LENGTH	INSIDE WIDTH	INSIDE HEIGHT	DOOR WIDTH	DOOR HEIGHT	CAPACITY	TARE WEIGHT	MAXI CARGO
19'4"	7'8"	7'10"	7'8"	7'6"	1,172 Cft	4,916 Lbs	47,900 Lbs
5.900 m	2.350 m	2.393 m	2.342 m	2.280 m	33.2 Cu. m	2,230 Kgs	21,770 Kgs
39'5"	7'8"	7'10"	7'8"	7'6"	2,390 Cft	8,160 Lbs	59,040 Lbs
12.036 m	2.350 m	2.392 m	2.340 m	2.280 m	67.7 Cu. m	3,700 Kgs	26,780 Kgs

INSIDE LENGTH	INSIDE WIDTH	INSIDE HEIGHT	DOOR WIDTH	DOOR HEIGHT	CAPACITY	TARE WEIGHT	MAXI CARGO
19'4"	7'7"	7'10"	7'6"	7'6"	1,150 Cft	5,060 Lbs	61,996 Lbs
5.900 m	2.311 m	2.390 m	2.286 m	2.280 m	32.63 Cu. m	2,300 Kgs	28,180 Kgs
39'5"	7'8"	8'10"	7'8"	8'5"	2,694 Cft	8,750 Lbs	58,450 Lbs
12.036 m	2.350 m	2.697 m	2.338 m	2.585 m	76.3 Cu. m	3,970 Kgs	26,510 Kgs

Upgraded 20'

Upgraded 40'



Reefer 20'

Reefer 40'

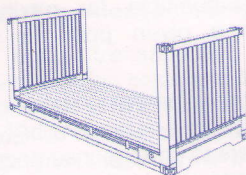
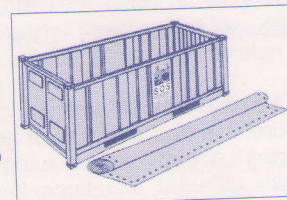
Reefer 40' High Cube

INSIDE LENGTH	INSIDE WIDTH	INSIDE HEIGHT	DOOR WIDTH	DOOR HEIGHT	CAPACITY	TARE WEIGHT	MAXI CARGO
17'8"	7'5"	7'5"	7'5"	7'3"	1,000 Cft	7,040 Lbs	45,760 Lbs
5.425 m	2.275 m	2.260 m	2.258 m	2.216 m	28.3 Cu. m	3,200 Kgs	20,800 Kgs
37'8"	7'5"	7'2"	7'5"	7'10"	2,040 Cft	10,780 Lbs	56,276 Lbs
11.493 m	2.270 m	2.197 m	2.282 m	2.155 m	57.8 Cu. m	4,900 Kgs	25,580 Kgs
37'11"	7'6"	8'2"	7'6"	8'0"	2,344 Cft	9,900 Lbs	57,561 Lbs
11.557 m	2.294 m	2.500 m	2.294 m	2.440 m	66.6 Cu. m	4,500 Kgs	25,980 Kgs

INSIDE LENGTH	INSIDE WIDTH	INSIDE HEIGHT	DOOR WIDTH	DOOR HEIGHT	CAPACITY	TARE WEIGHT	MAXI CARGO
19'4"	7'7"	7'8"	7'6"	7'2"	1,136 Cft	5,280 Lbs	47,620 Lbs
5.894 m	2.311 m	2.354 m	2.286 m	2.184 m	32.23 Cu. m	2,400 Kgs	21,600 Kgs
39'5"	7'8"	7'8"	7'8"	7'5"	2,350 Cft	8,490 Lbs	58,710 Lbs
12.028 m	2.350 m	2.345 m	2.341 m	2.274 m	65.5 Cu. m	3,850 Kgs	26,630 Kgs

Open Top 20'

Open Top 40'



Flat Rack 20'

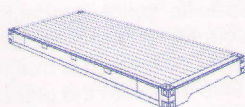
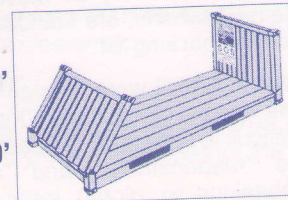
Flat Rack 40'

INSIDE LENGTH	INSIDE WIDTH	INSIDE HEIGHT	DOOR WIDTH	DOOR HEIGHT	CAPACITY	TARE WEIGHT	MAXI CARGO
18'5"	7'3"	7'4"	-	-	-	5,578 Lbs	47,333 Lbs
5.620 m	2.200 m	2.233 m	-	-	-	2,530 Kgs	21,470 Kgs
39'7"	6'10"	6'5"	-	-	-	12,081 Lbs	85,800 Lbs
12.080 m	2.438 m	2.103 m	-	-	-	5,480 Kgs	39,000 Kgs

INSIDE LENGTH	INSIDE WIDTH	INSIDE HEIGHT	DOOR WIDTH	DOOR HEIGHT	CAPACITY	TARE WEIGHT	MAXI CARGO
18'6"	7'3"	7'4"	-	-	-	6,601 Lbs	61,117 Lbs
5.618 m	2.208 m	2.233 m	-	-	-	2,750 Kgs	27,730 Kgs
39'7"	6'10"	6'5"	-	-	-	12,787 Lbs	85,800 Lbs
12.080 m	2.126 m	2.043 m	-	-	-	5,800 Kgs	39,000 Kgs

Flat Rack 20' Collapsible

Flat Rack 40' Collapsible



Platform 20'

Platform 40'

INSIDE LENGTH	INSIDE WIDTH	INSIDE HEIGHT	DOOR WIDTH	DOOR HEIGHT	CAPACITY	TARE WEIGHT	MAXI CARGO
19'11"	8'0"	7'4"	-	-	-	6,061 Lbs	52,896 Lbs
6.058 m	2.438 m	2.233 m	-	-	-	2,750 Kgs	24,000 Kgs
40'0"	8'0"	6'5"	-	-	-	12,783 Lbs	86,397 Lbs
12.18 m	2.40 m	1.95 m	-	-	-	5,800 Kgs	39,200 Kgs

Note : the average specifications above are given as an indication only. Great variations can be found between series and makes. Should a client have specific requirements his trucker will be responsible to ensure that the container he is picking up fits this requirement